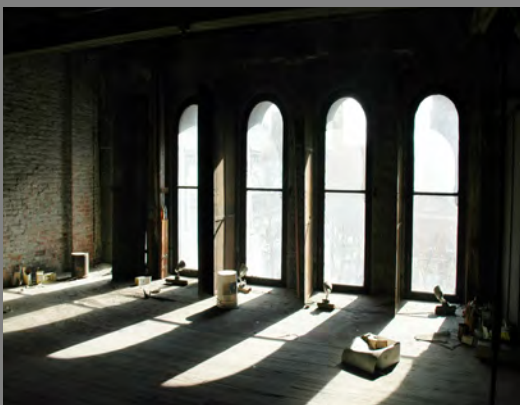


American Philosophical Society Museum



PROJECT

American Philosophical Society Museum
Philadelphia, Pennsylvania

CLIENT

American Philosophical Society Museum
Administered by: Heritage Preservation

DATES

2008 - 2009 CAP Study

DESCRIPTION

The American Philosophical Society (APS) occupies four buildings between Fourth and Fifth, and Chestnut and Walnut Streets in Philadelphia. The APS Museum is located within Philosophical Hall. The museum staff and administration offices are located within Richardson Hall, along with two other non-APS Museum tenants. Franklin Hall houses an Auditorium that is primarily used for Membership Meetings. The fourth building, Library Hall, was not included in this assessment.

CHALLENGE

We were retained by APS Museum to provide a summary of the buildings and systems conditions as they related to the storage and exhibition of the museum's collections. The study was contracted by the Conservation Assessment Program (CAP) and includes three of the four buildings occupied by the APS.

SERVICES

CAP Study

Provided on-site investigation of three of the buildings the American Philosophical Society occupies.

Documented the building and systems conditions for the APS Museum as they relate to the storage and exhibition of the museum's collections.

Identified and provided issues relevant to the Conservation Assessment Program (CAP) assessment in the form of a written report.

POINTS OF INTEREST

The APS is the oldest learned society in the United States, founded in 1793 by Benjamin Franklin.

The Museum houses an array of collections including 18th Century objects, scientific instruments, and fine art.

Philosophical Hall is a National Historic Landmark.